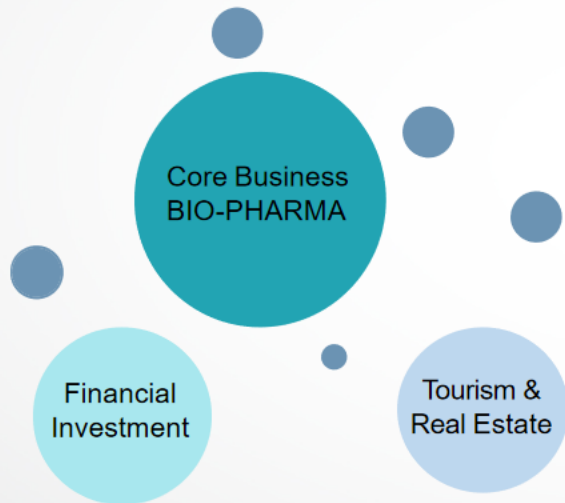






# Suzhou Tianma Pharma Group



- Pharma :  
Tianji Bio-Pharmaceutical Co., Ltd.  
(Suzhou, Changshu)  
Jiangsu Feima Pharmaceutical Co., Ltd.  
(Nantong)
- Tourism & Real Estate:  
Suzhou Hanyuan Yacht Resort  
DongMenTing Commercial Street
- Financial Investments:  
Angel investment for Momo, Yingke, Hammer,  
Sun-novo Pharmaceutical etc.



## Suzhou Tianma Pharma Group Tianji Bio-Pharmaceutical Co., Ltd

01

**Corporate Profile**

02

**Main Business**

03

**Advantage**

04

**New Facility**



# **PART 1**

## **CORPERATE PROFILE**



# COMPANY INTRODUCTION

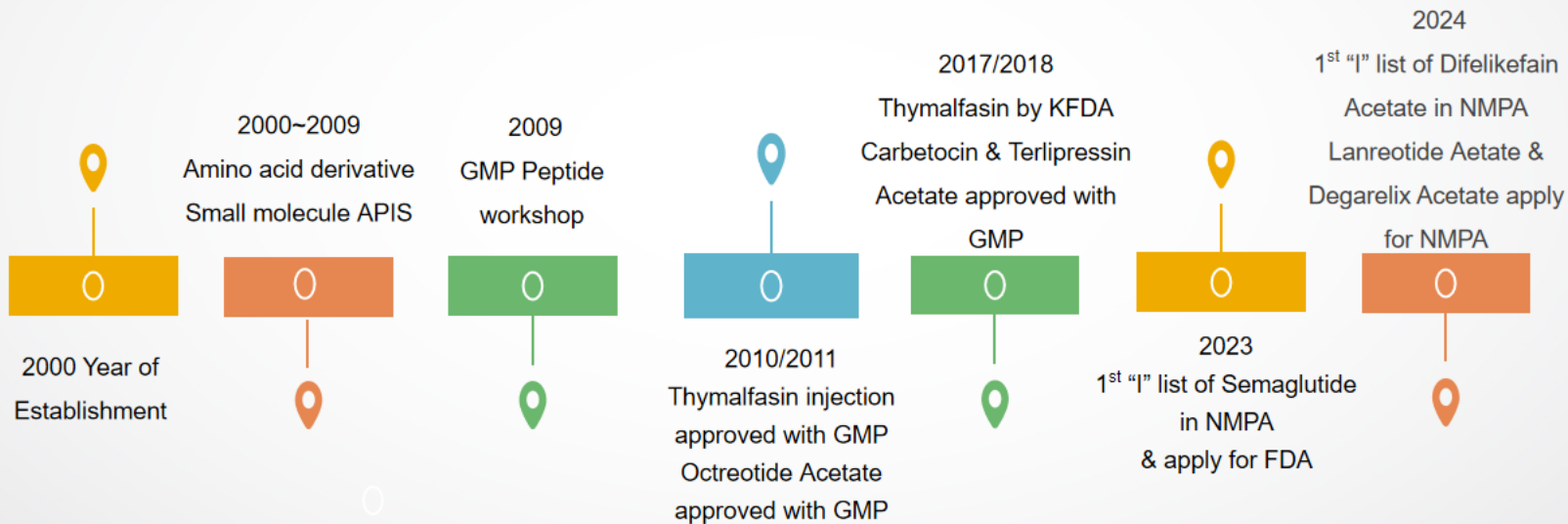


Suzhou Tianma Pharma Group Tianji Bio-pharmaceutical Co., Ltd is one of the leading companies in the domestic peptide industry. We're specializing in development, production and sales of peptide drugs, including APIs, small-volume injections (sterile), small-volume injections (non-sterile) and lyophilized powder injections. Meanwhile, we also provide customized services for peptide fragments and intermediates.



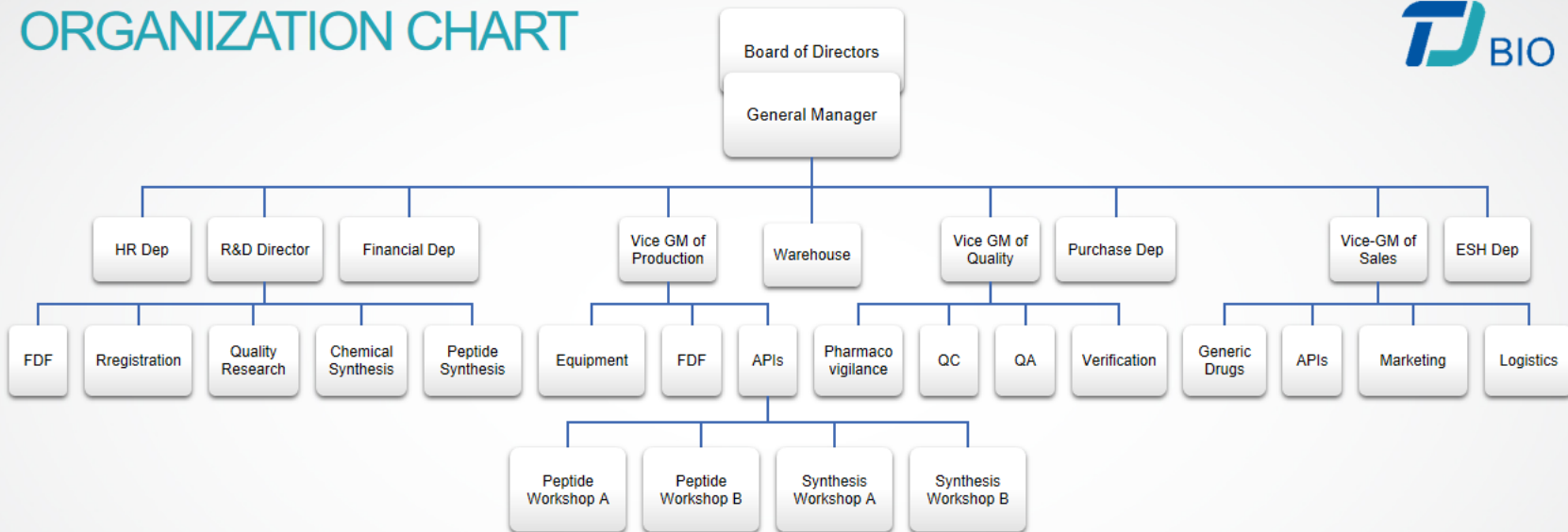


# DEVELOPMENT HISTORY





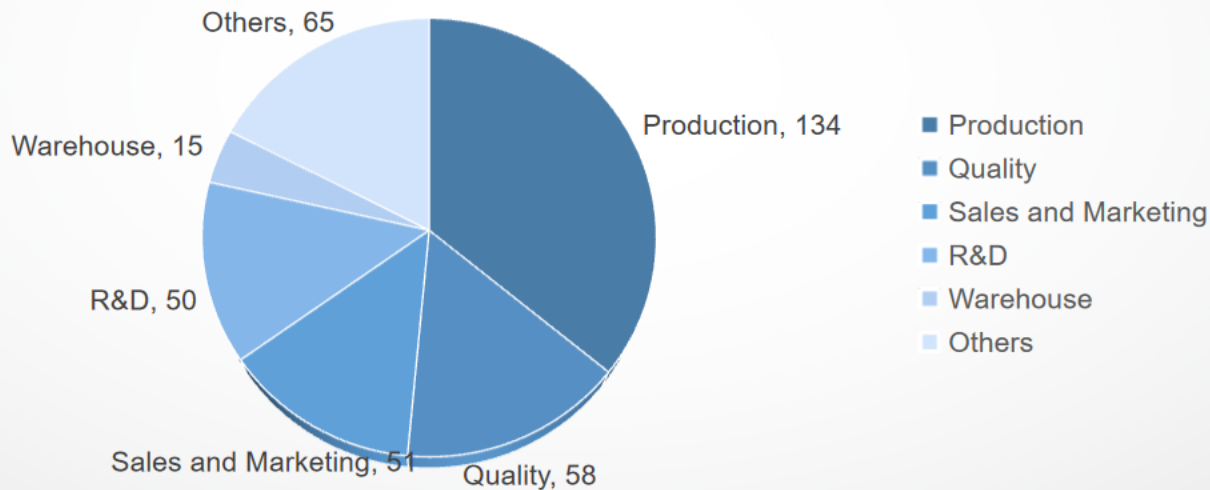
# ORGANIZATION CHART





# EMPLOYEE STRUCTURE

TOTAL: 373





# **PART 2**

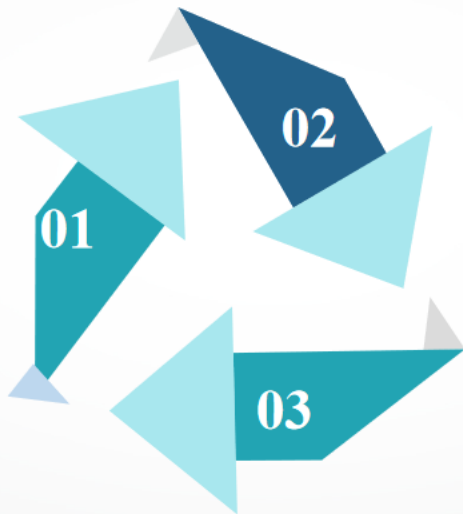
## **MAIN BUSINESS**



# PRODUCT CATEGORY

## Peptide APIs

- Thymalfasin (Thymosin alpha 1)
- Octreotide Acetate
- Carbetocin
- Desmopressin Acetate
- Terlipressin Acetate
- Triptorelin Acetate
- Oxytocin
- Liraglutide
- Semaglutide
- Linacotide
- Cetrorelix Acetate
- Difelikefalin Acetate
- Lanreotide Acetate
- Degarelix Acetate



## Custom service

- Customize peptide APIs
- Customize peptide intermediates
- Customize peptide fragments and modifications

## FDF

- 可利肽® Terlipressin for Injection
- 安析® Carbetocin Injection
- 立啞® Thymalfasin for Injection
- 安笠® Octreotide Acetate Injection
- 泽夕® Lornoxicam for Injection
- 泽达® Complex Potassium Hydrogen Phosphate Injection
- 安期® Pamidronate Disodium for Injection
- 舒平® Vinpocetine Injection
- 泽先® Clindamycin Phosphate for Injection
- 宏平® Levofloxacin Lactate Injection



# COMMERICAL APIS LIST



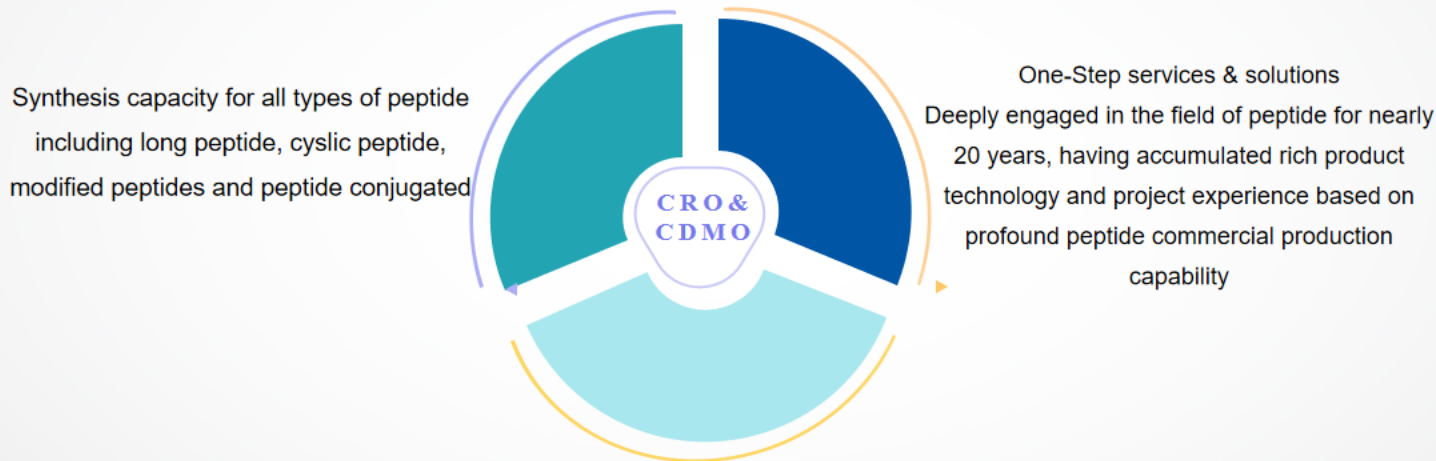
No.	PRODUCT NAME	STANDARD	DMF AVAILABLE	REVIEW STATUS
1	Thymopoietin	YBH23282005	√	A
2	Thymalfasin	NMPA/KFDA/DCGI	√	A
3	Octreotide Acetate	NMPA/EP	√	A
4	Carbetocin	NMPA/EP	√	A
5	Triptorelin Acetate	NMPA	√	A
6	Desmopressin Acetate	NMPA	√	A
7	Terlipressin Acetate	NMPA/EP	√	A
8	Oxytocin	NMPA	√	A



# PRODUCT UNDER DEVELOPMENT

No.	PRODUCT NAME	STANDARD	DMF AVAILABLE	REVIEW STATUS
1	Liraglutide	NMPA	√	I
2	Semaglutide	NMPA/FDA	√	I
3	Cetorelix Acetate	NMPA	√	I
4	Linaclotide	NMPA	√	I
5	Lanreotide Acetate	NMPA	√	I
6	Degarelix Acetate	NMPA	√	I
1	Tirzepatide	R&D	Q2 2025	Pilot
2	Plecanatide	R&D	Q3 2025	Pilot
3	Etelcalcetide	R&D	Q3 2025	Pilot
4	Teriparatide	R&D	Q4 2025	Pilot





## Peptide New Drug Development Capacity

Comprehensive peptide process development tool: Linear/fragment approach with solid phase/liquid phase peptide synthesis and hybrid approach; nanofiltration/ultrafiltration and API precipitation technologies.



# **PART 3**

# **ADVANTAGE**





## Advantage I

Every stage of the production is testing by physical and chemical.

Corresponding analytical methods and quality standard are established.



## Advantage II

The whole process from raw material purchasing to final dosage sales strictly complies with the CGMP quality control system (QA/QC/Validation), with the SOPs structure implemented throughout production.



## Advantage III

The quality team has 10+ years of experience in the quality control and testing of peptide drugs, and is equipped with advanced detection instruments for GC, HPLC, LC - MS.



# PEPTIDE R&D PLATFORM ADVANTAGES



## Whole Industry Chain capacity of peptide synthesis

3200m<sup>2</sup>+Peptide R&D Center with advanced instruments and equipment with GMP standard  
Meeting individual production needs from grams to kilograms



## Professional Technical Team

Our professional team (more than 10 PhD, Master..) has been working in the field of peptide for nearly 20 years and has the ability to solve the whole process of peptide drug development.



## Extensive project experience

Nearly 50 peptide API technologies, 20+ peptide formulation development capabilities







# **PART 4**

## **NEW FACILITY**



# FACTORY LAYOUT

- ① PEPTIDE API WORKSHOP 1
- ② PEPTIDE API WORKSHOP 2
- ③ SYNTHESIS WORKSHOP 1  
(Under Construction)
- ④ SYNTHESIS WORKSHOP 2  
(Under Construction)
- ⑤ WAREHOUSE
- ⑥ FORMULATION WORKSHOP
- ⑦ QC/QA OFFICE BUILDING
- ⑧ HAZARD SOLID WAREHOUSE
- ⑨ WASTE LIQUID WAREHOUSE





# PRODUCTION CAPACITY



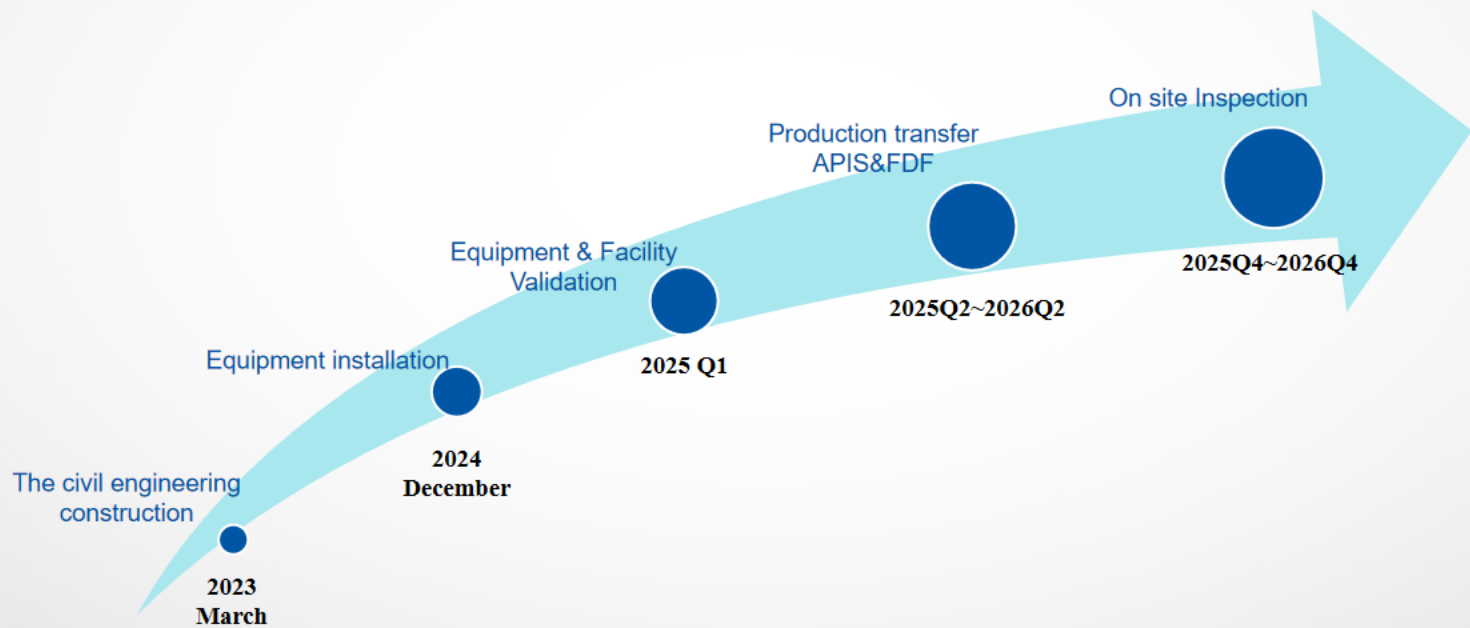
- Peptide drug Phase I (200kg), Phase II (500KG)
- Lyophilized powder injection (100 million pieces)
- Sterile injection solution (5 million in controlled bottles), cassette (6 million)



- Small volume injection (12.2 million units) and supporting raw materials (350 tons)
- Chinese medicine oral preparation (183 million tablets)
- Peptide long-lasting nanotechnology products (2 million pieces)
- Peptide products in oral dosage form, etc.



# DEVELOPMENT COURSE





# CORPORATE VISION



**The Leader  
of China  
domestic  
peptide  
drugs**

Core R&D technology

Rich Product Reserves

Excellent Product Quality

Strong sales channels





## Contact Us

### Suzhou Tianma Pharma Group Tianji Bio-Pharmaceutical Co., Ltd.

✓ **Add:** No. 77, Haichuang Road, New Material Industrial Park,  
Changshu

✓ **Tel:** +86-512-6832 2275

✓ **Fax:** +86-512-6687 9055

✓ **E-mail:** [peptide@tianmapharma.com](mailto:peptide@tianmapharma.com)





THANK YOU